

CABIN CREEK - CEDAR GROVE TRANSMISSION LINE REBUILD PROJECT

Appalachian Power representatives plan to increase electric reliability by upgrading the power grid serving customers in Kanawha County. The Cabin Creek - Cedar Grove Transmission Line Rebuild Project involves building approximately 4 miles of electric transmission line. Company representatives expect construction to begin in the summer of 2025 and conclude by December 2026.

WHAT

The project involves:

- Rebuilding approximately 4 miles of existing 46-kilovolt (kV) line
- Retiring aging equipment and infrastructure
- Addressing ongoing customer interruptions

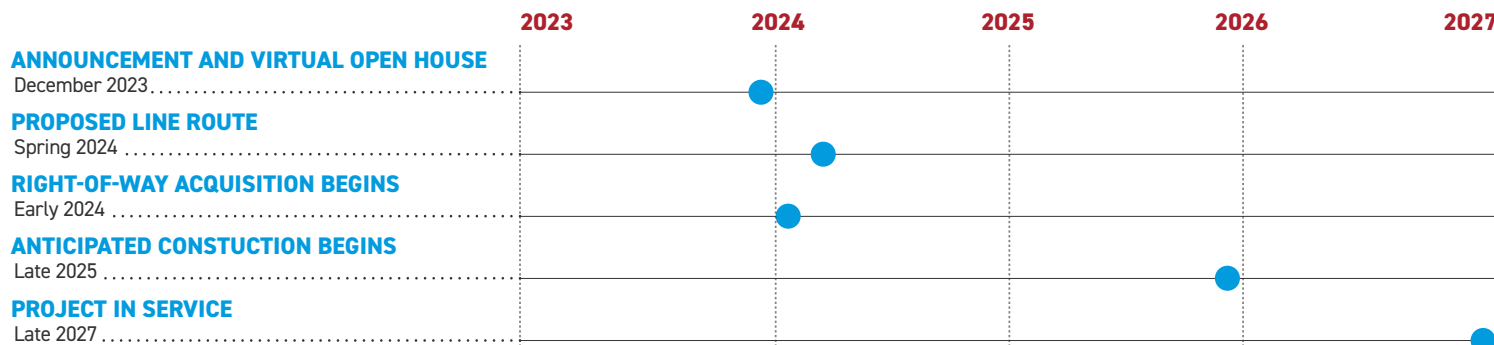
WHY

The existing power line consists of aging equipment originally installed in the early 1900s. The upgrades allow aging infrastructure to be replaced with modern equipment. Rebuilding the existing power line addresses frequent outages and improves the reliability for area customers. The upgrades enable the retirement of equipment located on difficult terrain.

WHERE

The proposed upgrades are expected to begin north of the Cabin Creek Substation, located off Chesapeake Street in Shrewsbury. The route continues northeast of the Kanawha River for 4 miles and ends at an existing structure, located in the Cedar Grove area between Horsemill Howell Road and Kelleys Creek Road.

PROJECT SCHEDULE

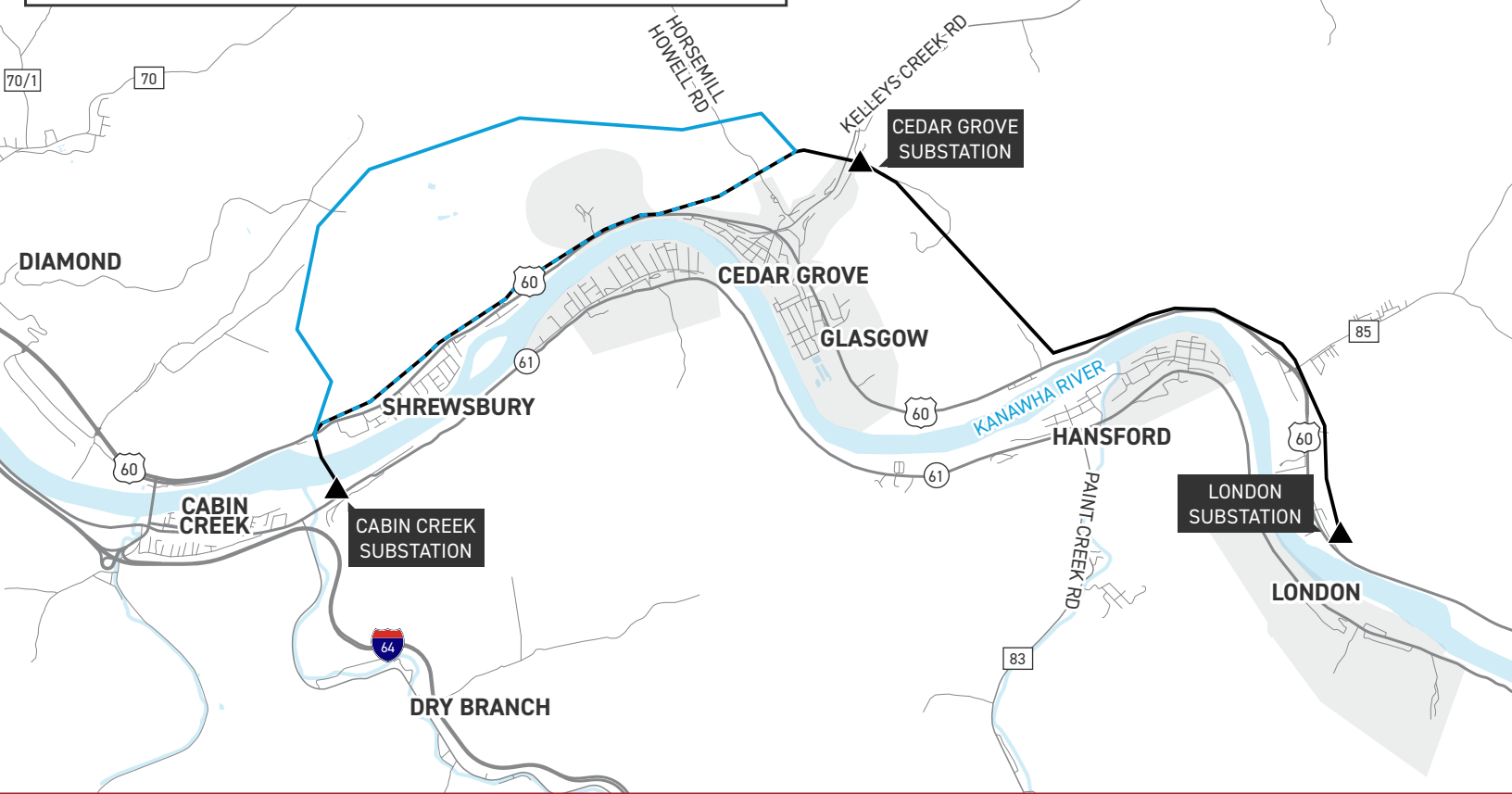


*Timeline subject to change.

CABIN CREEK - CEDAR GROVE TRANSMISSION LINE REBUILD PROJECT



- EXISTING TRANSMISSION LINE
- EXISTING SUBSTATION
- PROPOSED ROUTE FOR TRANSMISSION LINE IN NEW RIGHT-OF-WAY
- EXISTING TRANSMISSION LINE TO BE RELOCATED

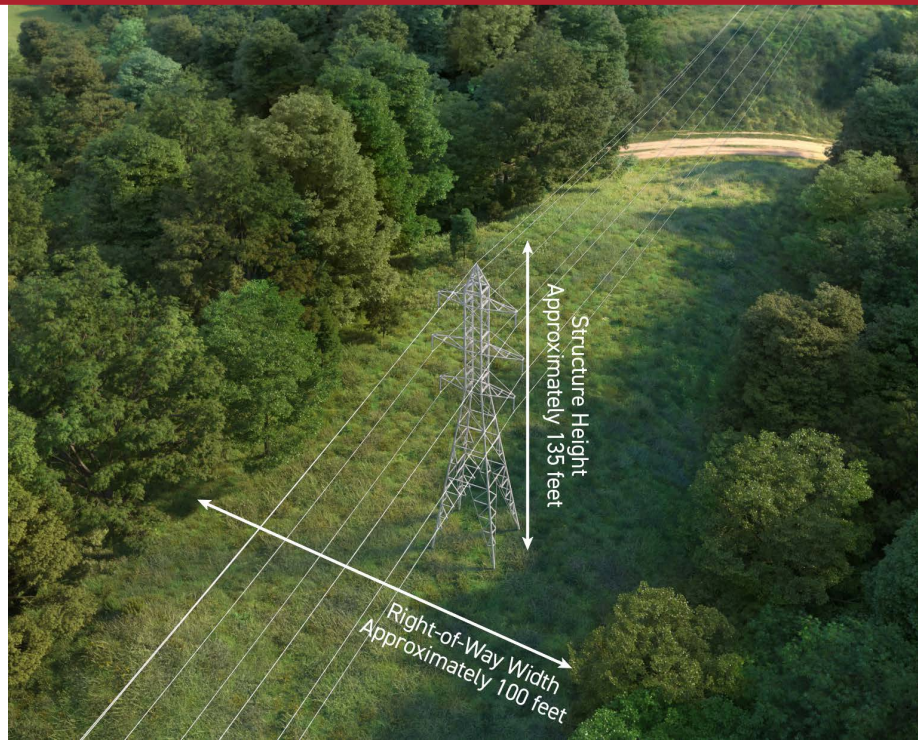


TYPICAL STRUCTURES

This project involves the use of lattice steel structures.

Structure Height: **Approximately 135 feet***

Right-of-Way Width: **Approximately 100 feet***



*Exact structure, height, and right-of-way requirements may vary.

WE VALUE YOUR INPUT. PLEASE SEND COMMENTS AND QUESTIONS TO:
 MICAELA HARRIS (POWER ENGINEERS, INC.) · PROJECT OUTREACH SPECIALIST
 APCO_OUTREACH@AEPTRANSMISSION.COM · 833-236-7697
 APPALACHIANPOWER.COM/CABINCREEKLONDON

